

# **NPAC 2022**

## **National Conference for Nurse Practitioners in Acute Care**

**The Westin Boston Seaport District  
Boston, MA**

**OCTOBER 19-23, 2022**

Pre-Conferences & APWs: October 19-20, 2022  
Main Conference: October 20-23, 2022

Acute Care NP

Emergency NP

Family NP

Adult NP

CNSs and  
Other APNs



ATTENDEE BROCHURE



[www.NPcourses.com/NPAC2022](http://www.NPcourses.com/NPAC2022)

Conference Chair  
Thomas W. Barkley, Jr., PhD, ACNP-BC, ANP, FAANP  
President, Barkley & Associates, Inc.



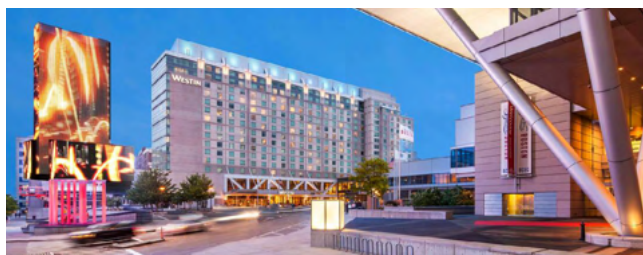
## Reasons Not to Miss!

- ✓ Attend the largest national conference specifically for nurse practitioners and advanced practice nurses working in acute care
- ✓ Update yourself on today's most recent issues, trends, and evidence-based practice guidelines
- ✓ Maximize advanced pharmacology contact hours required for national recertification
- ✓ Refine and perfect advanced procedures skills to enhance your practice
- ✓ Network with hundreds of NPs working in acute care throughout the country
- ✓ See all of the latest technologies, pharmaceuticals, medical devices, career opportunities, and other products in today's market in the exhibit hall
- ✓ Barkley & Associates, Inc. is approved as a provider of nurse practitioner continuing education by the American Association of Nurse Practitioners. AANP Provider Number 080518. This activity has been approved for **21.75** of contact hours of continuing education (which includes **12.75** hours of pharmacology and **1.5** hours of advanced procedures).

## Conference Fees

Attendee Registration Fees					
<b>New Year Sale!</b> Registered by January 17, 2022	<b>Early Bird</b> Registered by April 10, 2022	<b>Standard</b> Registered by June 10, 2022	<b>Regular</b> Registered by August 28, 2022	<b>Final</b> Registered by September 28, 2022	<b>Last Minute</b> Registered after September 28, 2022
<b>\$529</b>	<b>\$569</b>	<b>\$609</b>	<b>\$649</b>	<b>\$689</b>	<b>\$719</b>

## Conference Location



**Westin Boston Seaport District**  
425 Summer St.  
Boston, MA 02210

Explore the city or enjoy an evening of relaxation at our hotel located two blocks from the Boston waterfront. From the Seaport District, go for a stroll or take a water taxi to attractions such as the Tea Party Ships and Museum, Boston Children's Museum, or New England Aquarium.

Take advantage of our special discounted hotel rate; rooms are limited!

[Reserve Your Room Here | \\$299 per Night](#)

If the block rate is no longer available, member rates may be offered for some or all of your dates.

Full Time Nursing Student* & Retired Nurse Practitioner	
<b>Standard</b> Ends August 24, 2022	<b>Last Minute</b> After August 24, 2022
<b>\$449</b>	<b>\$549</b>

\*Proof of student status required. School transcript or student ID with date is acceptable.

## Important Dates

New Year Sale Registration	Ends January 17, 2022
Early Bird Registration	Ends April 10, 2022
Standard Registration	Ends June 10, 2022
Regular Registration	Ends August 28, 2022
Final Registration	Ends September 28, 2022
No Refund Period	After August 19, 2022
Last Minute Registration	After September 28, 2022
First Day of Pre-Conferences	October 19, 2022
First Day of NPAC	October 21, 2022

## Registration Information

Simply go to <https://npac.NPcourses.com/NPAC2022> to register. Registration must be completed online.

If you do not receive an email receipt within 2 business days, please email [Barkley@NPcourses.com](mailto:Barkley@NPcourses.com).

### Pay by Check

Only business checks from hospitals, medical centers, or healthcare organizations will be honored. Checks must be received no later than 14 days after the date of registration to be honored at the registration-date price. Please make your check out to "Barkley & Associates, Inc.", Memo: NPAC Conference 2022, and mail your check with a copy of your registration confirmation to the following address:

Attn: NPAC 2022  
Barkley & Associates, Inc.  
8060 Melrose Ave., Suite 230  
Los Angeles, CA 90046

### Cancellation Policy & Fees

Submit conference cancellation requests in writing to Barkley & Associates, Inc. at [Barkley@NPcourses.com](mailto:Barkley@NPcourses.com).

Before May 6, 2022: **\$150 administrative fee**

May 6, 2022 until August 19, 2022: **\$250 administrative fee**

After August 19, 2022: **No refunds (regardless of reason)**

\*Conference prices are subject to change without notice.

\*Attendees are strongly encouraged to consider trip insurance, similar to what is purchased for cruises or holiday packages.

### Advanced Procedures Workshops

\*Due to high demand and the need to reserve seats to maintain small groups, no refunds are allowed once registered for an APW, regardless of the reason. In addition, no refunds will be given to registrants who do not attend their scheduled workshop, regardless of the reason.

### Pre-Conferences

The fee to add-on a Pre-Conference after main conference registration is \$60 each.

The fee for transferring each Pre-Conference is \$60.

### Registration Transfer

A transfer fee of \$100 will apply for transfers from one person to another for main conference registration. Prices are subject to change without notice.

### Force Majeure

In the unlikely event that Barkley & Associates, Inc. has to cancel the conference for reasons beyond their control, including but not limited to acts of God or nature, strikes, war, terrorist acts, hotel labor disputes, disease (e.g., epidemics, pandemics), civil disturbances, travel advisories, or other government restrictions, the liability of Barkley & Associates, Inc. shall be limited to a refund of the attendee's course registration fee.

## General Information

### Contact Hours/Pharmacology

This conference is approved for **21.75** hours of continuing education (which includes **12.75** hours of pharmacology and **1.5** hours of advanced procedures). This activity has been planned and implemented in accordance with the accreditation Standards of the American Association of Nurse Practitioners (AANP).

Barkley & Associates is accredited by the American Association of Nurse Practitioners as an approved provider of nurse practitioner continuing education. (Provider number: 080518)

Provider approved by the California Board of Registered Nursing. (Provider Number: CEP 15436)

All NP state regulatory agencies (i.e., State Boards of Nursing) and all national certifying bodies (e.g., ANCC, AANP, AACN, PNCB, and NCC) recognize and accept AANP CE credit for recertification.

### Conference Handouts

All attendees have access to each General Session PowerPoint PDF, located in the NPcourses customer portal. Access to the conference manual will be available 1 week prior to the conference.

For your convenience, a printed and bound conference manual featuring PowerPoint PDFs for all General Sessions is available for a \$50 purchase with free shipping. The manual will be mailed to your home address approximately 2 weeks prior to the conference.

## Exhibit Hall

As you plan your NPAC schedule, don't forget to leave time to visit the Exhibit Hall. You'll find many exhibits with representatives ready to showcase the best of their companies' products. Take full advantage of the opportunity to learn about the latest technologies, pharmaceuticals, medical devices, and career opportunities in today's market.

Participate in the Exhibit Hall Scavenger Hunt by visiting all the exhibit booths to qualify for a chance to win a FREE 2024 NPAC registration!

Is your hospital, employer, or organization interested in exhibiting? Please email [NPAC@NPcourses.com](mailto:NPAC@NPcourses.com) for more details.

# Advanced Procedures Workshops (APWs)

To obtain procedural CE, and to maximize a fully hands-on experience, this workshop requires attendees to review approximately one hour of material prior to the session. Assignments will be located in each customer's Barkley & Associates' portal approximately 4 weeks prior to the conference.

In addition to meeting ANCC, AACN, and AANPCB recertification CE credit, all Advanced Procedures Workshops are approved to meet the AANPCB requirement of 30 hours in emergency care procedural skills to be eligible to sit for national ENP certification.

**WEDNESDAY, OCTOBER 19 - THURSDAY, OCTOBER 20, 2022**



## **Advanced Procedures Workshop A: Landmark & Ultrasound-guided Central Line Placement & Vascular Access**

Nichole Crenshaw, DNP, ARNP, AGACNP-BC, ANP-BC, CHSE, FAANP  
Rita Dello Stritto, PhD, CNS, ENP, ACNP-BC, FAANP  
(EJ, IJ, Subclavian, Femoral Sites & Intraosseous Line Placement;  
Limited to ~ 16 attendees in two groups; 3.0 contact hours; 3.0 hours of Advanced Procedures)  
APW 1A, 2A, 3A, 4A, 5A, 6A\*



## **Advanced Procedures Workshop B: Difficult Airway Management**

Steven W. Branham, PhD, ACNP-BC, FNP-BC, FAANP  
(Adjunct Airways [nasal trumpet, oral airway, LMA], Endotracheal Intubation, Use of Bougie, King Airway Tube Placement, Cricothyrotomy, & Other Strategies; Limited to ~ 10 seats; 3.0 contact hours; 3.0 hours of Advanced Procedures)  
APW 1B, 2B, 3B, 4B, 5B, 6B\*



## **Advanced Procedures Workshop C: Landmark & Ultrasound-guided Thoracentesis, Needle Decompression, & Chest Tube Insertion**

Lisa Evans, DNP, ACNP-BC  
(Limited to ~ 10 seats; 3.0 contact hours; 3.0 hours of Advanced Procedures)  
APW 1C, 2C, 3C, 4C, 5C, 6C\*



## **Advanced Procedures Workshop D: Landmark & Ultrasound-guided Lumbar Puncture, Paracentesis, & Extended Focused Assessment with Sonography in Trauma (EFAST) Exam**

Charles L. Schreiner, IV, MHA, MS, ACNP-BC, RNFA  
(Limited to ~ 10 seats; 3.0 contact hours; 3.0 hours of Advanced Procedures)  
APW 1D, 2D, 3D, 4D, 5D, 6D\*

\*Schedule available on [www.NPCourses.com/NPAC2022/advanced-procedures-workshops/](http://www.NPCourses.com/NPAC2022/advanced-procedures-workshops/)

*Due to high demand and the need to reserve seats to maintain small groups, no refunds are allowed once registered for an APW, regardless of the reason. In addition, no refunds will be given to registrants who do not attend their scheduled workshop, regardless of the reason.*

*Barkley & Associates reserves the right to reassign attendees to a different Advanced Procedures Workshop time, if needed, to ensure optimal group learning and appropriate faculty to student ratios. In this case, attendees will be notified in advance of alternatives.*

*The fee for transferring any APW to another attendee is \$60.*



# Pre-Conferences

WEDNESDAY OCTOBER 19, 2022

## Pre-Conference 1 - 12-Lead EKG: From Start to Competent in 3 Hours!

Joan King, PhD, ACNP-BC, ANP-BC, FAANP

This presentation is designed to increase the confidence and clinical proficiency of NPs at all levels of experience with 12-Lead EKG interpretation. Once we have reviewed the foundational principles of 12-Lead EKGs, we will elaborate on a variety of 12-Lead EKG patterns, including inferior, septal, anterior, lateral, and posterior infarctions. We will also discuss right ventricular infarction patterns, emphasizing these patterns' clinical significance as well as their association with inferior and posterior infarctions.

In addition, the session will present the criteria for identifying reciprocal changes, left and right ventricular hypertrophy, strain, and left and right bundle branch blocks—and highlight important implications of these findings. Throughout the presentation, illustrative examples of each 12-Lead EKG finding will reinforce covered content. In the end, the participant should feel certain that they've gone from "I'm never quite sure" to "I've got it!" (Seats are limited; 3.0 contact hours; 0.5 hours of Advanced Pharmacology; 3.0 hours of Advanced Procedures)

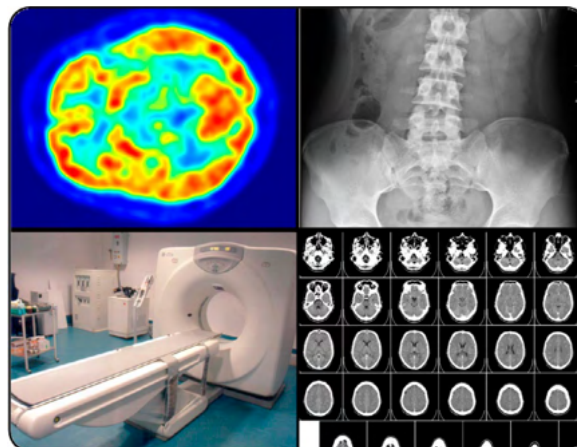


## Pre-Conference 2 - ADVANCED Imaging and Radiology

### Workshop: CTs, MRIs, PET, and More!

Katherine W. Rogers, DNP, ANP-C, AGACNP-BC

Knowing the difference between various radiology techniques and protocols is vital knowledge for all nurse practitioners. Beyond an understanding of basic X-ray interpretation, ADVANCED imaging and radiology provide a mechanism to more effectively diagnose complex patient conditions. This presentation will explore appropriate imaging technologies for NPs to consider when evaluating patients with both common and uncommon complaints. Case studies will be used to illustrate the latest evidence-based practices in ADVANCED patient imaging. (Seats are limited; 3.0 contact hours; 0.25 hours of Advanced Pharmacology; 3.0 hours of Advanced Procedures)



## Pre-Conference 5 - Cardiac Valvular Disease Workshop

Kristine Anne Scordo, PhD, ACNP-BC, FAANP

With the dramatic aging of the American population over the past several decades, degenerative lesions of the mitral and aortic valves that result in mitral regurgitation, aortic stenosis, or aortic regurgitation are now the most prevalent valvular disorders that require intervention. This workshop will better prepare nurse practitioners to diagnose and treat patients with valvular heart disease, which remains a common cause of morbidity and mortality. The session focuses on the latest practice guidelines, along with advanced cardiac assessment, echocardiographic, and other diagnostics to improve patient management. Mitral valve prolapse syndrome (a common valvular disorder) and the differentiation of acute versus chronic mitral regurgitation are also discussed. (Seats are limited; 3.0 contact hours; 1.0 hours of Advanced Pharmacology; 1.0 hours of Advanced Procedures)



"I highly recommend these Advanced Procedures Workshops to all!"

-NPAC 2018 Attendee



**THURSDAY, OCTOBER 20, 2022**

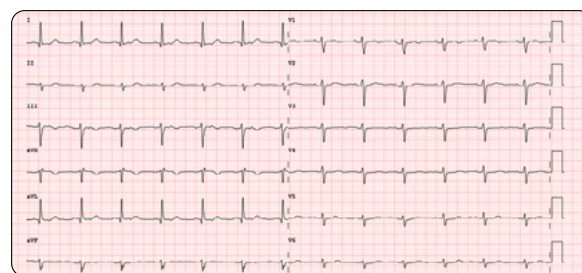
### **Pre-Conference 3 - ADVANCED 12-Lead EKG Workshop**

Joan King, PhD, ACNP-BC, ANP-BC, FAANP

So you're comfortable with the foundational principles of 12-Lead EKG interpretation. What are some of the more nuanced interpretive standards to utilize while you implement this key assessment tool? When should you worry?

This ADVANCED 12-Lead EKG interpretation workshop will begin with a discussion of AV blocks, focusing on the guidelines that differentiate a Mobitz I second-degree AV block from a Mobitz II second-degree AV block. Key information about third-degree heart blocks, right and left bundle branch blocks, and hemiblocks will also be presented. In addition, we will focus on the salient features, causes, and management strategies of complex dysrhythmias. Other topics include complex tachycardias (e.g., Wolff-Parkinson-White syndrome and Long-Ganong-Levine syndrome) and the differentiation between sinus arrests and sinus blocks. Join us for an informative and detailed workshop that will strengthen your ability and confidence with the 12-Lead EKG.

(Seats are limited; 3.0 contact hours; 0.5 hours of Advanced Pharmacology; 3.0 hours of Advanced Procedures)



### **Pre-Conference 4 - Radiology Review: From the Beginning Novice to Expert in 3 Hours!**

Katherine W. Rogers, DNP, ANP-C, AGACNP-BC

Being able to review an X-ray is an important role for the nurse practitioner, yet many do not have a firm understanding of the basics in imaging interpretation. This session will take participants from the very basics of understanding the shades between black and white on an X-ray, to the more advanced techniques of identifying pneumonia, heart failure, cardiomegaly, pleural effusions, bowel obstructions, spinal injuries, Salter-Harris fractures, and much more. Within 3 hours, you will go from beginning novice to expert in X-ray interpretation in the acute care setting. (Seats are limited; 3.0 contact hours; 0.25 hours of Advanced Pharmacology; 3.0 hours of Advanced Procedures)

**"The Pre-Conferences make this conference a complete experience!"**

**-NPAC 2018 Attendee**





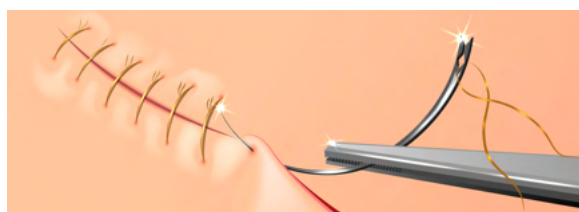
### Pre-Conference 6 - Mechanical Ventilation Boot Camp

James M. Walter, MD  
Thomas C. Corbridge, MD, FCCP

The mechanical ventilator is the leading support device in critical care. It supports gas exchange, decreases work of breathing, and is an integral part of shock management. This comprehensive boot camp targets both entry-level and intermediate practitioners responsible for the care of mechanically ventilated patients. This session provides rationales for initial ventilator settings and adjustments based on blood gases, synchrony, and waveform analysis. By the end of this boot camp, nurse practitioners in acute care will have a better understanding of the interplay between the patient and the machine to optimize benefit and mitigate risk to their patients. (Seats are limited; 3.0 contact hours; 0.5 hours of Advanced Pharmacology; 3.0 hours of Advanced Procedures)

### Pre-Conference 7 - Advanced Suturing: Beyond the Basics

Rita Dello Stritto, PhD, CNS, ENP, ACNP-BC, FAANP  
Steven W. Branham, PhD, ACNP-BC, FNP-BC, FAANP  
Charles L. Schreiner, IV, MHA, MS, ACNP-BC, RNFA  
Michelle Boone, DNP, FNP-C, AGACNP-BC, PMHNP-BC



Multilayer Closure, Vertical and Horizontal Mattress, Stellate Lac Repair, Aberdeen Knot, Running Simple Suture, Subcuticular Running Suture, Chest Tube Suture Technique, Figure 8, and others as time permits (Seats are limited; 4.0 contact hours; 0.25 hours of Advanced Pharmacology; 4.0 hours of Advanced Procedures)

**THURSDAY, OCTOBER 20, 2022**

## Keynote & Welcome Reception

**4:30 p.m. - 4:50 p.m.**

**Exploring the Current State of NP Practice in Acute Care**

Thomas W. Barkley, Jr., PhD, ACNP-BC, ANP, FAANP

## Opening Keynote Address

**4:50 p.m. - 6:00 p.m.**

**Celebrating All You Do!**

Sheila Melander, PhD, ACNP-BC, FCCM, FAANP, FAAN  
Associate Dean of MSN & DNP Faculty & Practice Affairs  
and

William S. Elizabeth M. Morgan Professor for Professional Nursing Practice  
University of Kentucky  
College of Nursing  
Lexington, KY



## Welcome Reception and Grand Opening of Exhibits

**6:00 p.m. - 8:00 p.m.**

**"One of the better conferences that I have ever attended."**

**-NPAC 2018 Attendee**

# Conference Schedule

## FRIDAY, OCTOBER 21, 2022

6:00 a.m.	Conference Registration Open
6:30 a.m. - 7:30 a.m.	Continental Breakfast with Exhibitors - Refereed Poster Session 1
7:30 a.m. - 8:45 a.m.	<b>Acute Care Infectious Diseases Update 2022</b> Thomas W. Barkley, Jr., PhD, ACNP-BC, ANP, FAANP
8:45 a.m. - 10:00 a.m.	<b>Pulmonary Hypertension: A Close Look from the Cardiac Perspective</b> Jennifer Kliner, MSN, ACNP-BC
10:00 a.m. - 10:30 a.m.	Break - Exhibits - Refereed Poster Session 1 (continued)
10:30 a.m. - 11:45 a.m.	<b>The Down and Dirty of Extracorporeal Membrane Oxygenation in Cardiac and/or Respiratory Failure</b> James M. Walter, MD
11:45 a.m. - 1:00 p.m.	Lunch on Own or Industry-Supported Product Theater
1:00 p.m. - 2:15 p.m.	<b>Stroke Care Today: From the ED to the ICU to the Floor and More</b> Mary P. Amatangelo, DNP, ACNP-BC, CCRN, CNRN, SCRNP, FAHA
2:15 p.m. - 2:45 p.m.	Break - Exhibits - Refereed Poster Session 1 (continued)
2:45 p.m. - 4:00 p.m.	<b>Optimizing Medical Ethics Decision-Making for NPs in Acute Care</b> Jeffrey J. Kaufhold, MD, FACP, HEC-C
4:00 p.m. - 5:15 p.m.	<b>Non-Diabetic Endocrine Emergencies: Managing Acute Care Hormonal Nightmares</b> Christine Kessler, MN, ANP-C, CNS, BC-ADM, CDTC, FAANP
5:15 p.m.	Adjourn

## SATURDAY, OCTOBER 22, 2022

6:00 a.m.	Conference Registration Open
6:30 a.m. - 7:30 a.m.	Continental Breakfast with Exhibitors – Refereed Poster Session 2
7:30 a.m. - 8:45 a.m.	<b>Sepsis Imposters</b> Dawn L. Carpenter, DNP, ACNP-BC
8:45 a.m. - 10:00 a.m.	<b>Rash, Lesion, or What? Dermatology Uncertainties in the Acute Care Patient</b> Mark Eliason, MD
10:00 a.m. - 10:30 a.m.	Break - Exhibits - Refereed Poster Session 2 (continued)
10:30 a.m. - 11:45 a.m.	<b>Falls and Delirium: Interlocking and Deadly Geriatric Syndromes</b> Maura Kennedy, MD, MPH
11:45 a.m. - 1:00 p.m.	Lunch on Own or Industry-Supported Product Theater
1:00 p.m. - 2:15 p.m.	<b>Palliative Care &amp; End-of-Life: Working Through Difficult Clinical Situations in Acute Care</b> Garrett K. Chan, PhD, ACNP-C, FAEN, FPCN, FNAP, FCNS, FAANP, FAAN



**SATURDAY, OCTOBER 22, 2022**

2:15 p.m. - 2:45 p.m.	<b>Break - Exhibits - Refereed Poster Session 2 (continued)</b>
2:45 p.m. - 4:00 p.m.	<b>Venous Thrombotic Events, The Subtle Killer: Update on Current Prevention and Management</b> Daria Ruffolo, DNP, ACNP-BC, CCRN
4:00 p.m. - 4:45 p.m.	<b>Essentials in Managing Inpatient Hypertension</b> Lawrence Carey, PharmD
4:45 p.m. - 5:15 p.m.	<b>Exploring the Top Drugs in Acute Care (Part 1)</b> Elizabeth VandeWaa, PhD
5:15 p.m.	<b>Adjourn</b>

**SUNDAY, OCTOBER 23, 2022**

6:00 a.m.	<b>Conference Registration Open</b>
6:30 a.m. - 7:30 a.m.	<b>Continental Breakfast with Exhibitors – Refereed Poster Session 2</b>
7:30 a.m. - 8:00 a.m.	<b>Exploring the Top Drugs in Acute Care (Part 2)</b> Elizabeth VandeWaa, PhD
8:00 a.m. - 8:45 a.m.	<b>Atrial Fibrillation and Anticoagulation</b> Lawrence Carey, PharmD
8:45 a.m. - 9:30 a.m.	<b>Acute Care Headaches: New Treatments and New Controversies</b> Elizabeth VandeWaa, PhD
9:30 a.m. - 9:45 a.m.	<b>Break</b>
9:45 a.m. - 10:45 a.m.	<b>Managing Central Nervous System Infections</b> Lawrence Carey, PharmD
10:45 a.m. - 11:15 a.m.	<b>What You Don't Know That Can Kill Your Patient: Unrecognized Reasons for Medication Errors</b> Elizabeth VandeWaa, PhD
11:15 a.m. - 11:45 a.m.	<b>What Else is New or News in Acute Care Pharmacology 2022?</b> Lawrence Carey, PharmD Elizabeth VandeWaa, PhD
11:45 p.m. - 12:00 p.m.	<b>Conference Summary and Future Directives</b> Thomas W. Barkley, Jr., PhD, ACNP-BC, ANP, FAANP
12:00 p.m.	<b>Adjourn</b>

**TOTAL CE****21.75** Contact Hours**PHARMACOLOGY****12.75** Contact Hours**ADVANCED PROCEDURES****1.5** Contact Hours

**"It's exciting to learn about informative topics from outstanding speakers!"**  
**-NPAC 2018 Attendee**

# Conference Faculty

**Mary P. Amatangelo, DNP, ACNP-BC, CCRN, CNRN, SCRNP, FAHA, FCNS**

Nurse Practitioner  
Neuroscience ICU  
Brigham and Women's Hospital  
Boston, MA

**Thomas W. Barkley, Jr., PhD, ACNP-BC, ANP, FAANP**

President  
Barkley & Associates, Inc.  
Los Angeles, CA  
and  
Professor Emeritus  
California State University, Los Angeles  
Patricia A. Chin School of Nursing  
Los Angeles, CA

**Lawrence Carey, PharmD**

Assistant Dean for Assessment & Quality  
Clinical Professor of Pharmacy Practice  
Temple University School for Pharmacy  
and  
Clinical Pharmacist in Internal Medicine  
Temple University Hospital  
Philadelphia, PA  
and  
Lecturer, Barkley & Associates, Inc.  
Los Angeles, CA

**Dawn L. Carpenter, DNP, ACNP-BC**

Associate Professor  
University of Massachusetts Medical School  
Graduate School of Nursing  
Worcester, MA

**Garrett K. Chan, PhD, ACNP-C, FAEN, FPCN, FNAP, FCNS, FAANP, FAAN**

President and CEO, HealthImpact  
Oakland, CA  
and  
Associate Adjunct Professor  
UCSF School of Nursing  
San Francisco, CA

**Mark Eliason, MD**

Associate Clinical Professor  
University of Utah  
College of Medicine  
Salt Lake City, UT

**Jeffrey J. Kaufhold, MD, FACP, HEC-C**

Nephrology Associates of Dayton, Inc.  
Dayton, OH

**Maura Kennedy, MD, MPH**

Division Chief of Geriatric Emergency Medicine  
Massachusetts General Hospital  
and  
Assistant Professor of Emergency Medicine  
Harvard Medical School  
Boston, MA

**Christine Kessler, MN, ANP-C, CNS, BC-ADM, CDT, FAANP**

Founder, Nurse Practitioner Metabolic Medicine Associates  
King George, VA

**Jennifer Kliner, MSN, ACNP-BC**

Clinical Project Director  
UPMC Heart and Vascular Institute  
Advanced Heart Failure and Pulmonary Hypertension  
Programs  
Pittsburgh, PA

**Sheila Melander, PhD, ACNP-BC, FCCM, FAANP, FAAN**

Associate Dean of MSN & DNP Faculty & Practice Affairs  
William S. & Elizabeth M. Morgan Professor for Professional  
Nursing Practice  
University of Kentucky  
College of Nursing  
Lexington, KY

**Daria Ruffolo, DNP, ACNP-BC, CCRN**

Assistant Professor  
Adult-Gerontology Acute Care Nurse Practitioner Program  
Loyal University – Chicago  
Marcella Niehoff School of Nursing  
and  
Acute Care Nurse Practitioner  
Department of Anesthesia  
Loyola University Medical Center  
Chicago, IL

**Elizabeth VandeWaa, PhD**

Professor  
University of South Alabama  
College of Nursing  
Mobile, AL  
and  
Lecturer, Barkley & Associates, Inc.  
Los Angeles, CA

**James M. Walter, MD**

Assistant Professor of Pulmonary and  
Critical Care Medicine  
Northwestern University  
Feinberg School of Medicine  
Chicago, IL



## Pre-Conference Faculty

### **Michelle Boone, DNP, FNP-C, AGACNP-BC, PMHNP-BC**

Founder and Owner  
Compassion Health & Wellness Clinic, PLLC  
Nashville, AR

### **Steven W. Branham, PhD, ACNP-BC, FNP-BC, FAANP**

Professor  
Texas Tech University Health Sciences Center  
School of Nursing  
Lubbock, TX

### **Thomas C. Corbridge, MD, FCCP**

Emeritus Physician, Northwestern Memorial Hospital  
Adjunct Professor of Pulmonary and  
Critical Care Medicine  
Northwestern University  
Feinberg School of Medicine  
Chicago, IL

### **Nichole Crenshaw, DNP, AGACNP-BC, ANP-BC, CHSE, FAANP**

Associate Dean for Undergraduate Nursing Programs  
Associate Professor of Clinical  
University of Miami  
School of Nursing and Health Studies  
and  
Associate Provost for Diversity, Equity, and Inclusion  
University of Miami  
Miami, FL

### **Rita Dello Stritto, PhD, CNS, ENP, ACNP-BC, FAANP**

Professor  
Texas Woman's University  
College of Nursing  
Houston, TX

### **Lisa Evans, DNP, ACNP-BC**

Acute Care Nurse Practitioner  
Integrated Critical Care & Pulmonary Specialists, Inc.  
St. Joseph Hospital  
Orange, CA

### **Joan King, PhD, ACNP-BC, ANP-BC, FAANP**

Acute Care Nurse Practitioner  
Vanderbilt University Medical Center  
and  
Professor Emerita  
Vanderbilt University  
School of Nursing  
Nashville, TN

### **Katherine W. Rogers, DNP, ANP-C, AGACNP-BC**

Interim, VP Patient Care Service, CNO  
System Director of Advanced Practice Providers  
Norton Medical Group Cardiothoracic Surgery  
Norton Healthcare  
Louisville, KY

### **Charles L. Schreiner, IV, MHA, MS, ACNP-BC, RNFA**

Acute Care Nurse Practitioner  
University of South Florida Infectious Diseases  
Global Emerging Diseases Institute  
Tampa General Hospital  
Tampa, FL

### **Kristine Anne Scordo, PhD, ACNP-BC, FAANP**

Professor Emerita  
Wright State University  
College of Nursing  
Dayton, OH  
and  
Acute Care Nurse Practitioner  
Dayton Cardiology  
Kettering, OH  
and  
TriHealth Infectious Diseases  
Cincinnati, OH

### **James M. Walter, MD**

Assistant Professor of Pulmonary and  
Critical Care Medicine  
Northwestern University  
Feinberg School of Medicine  
Chicago, IL

## Conference Planning Committee

### **Thomas W. Barkley, Jr., PhD, ACNP-BC, ANP, FAANP**

Los Angeles, CA

### **Kathy Magdic, DNP, ACNP-BC, FAANP**

Pittsburgh, PA

### **Michelle Boone, DNP, FNP-C, AGACNP-BC, PMHNP-BC**

Nashville, AR

### **Sheila Melander, PhD, ACNP-BC, FAANP, FCCM, FAAN**

Lexington, KY

### **Susan J. Corbridge, PhD, ACNP-BC, FAANP, FAAN**

Chicago, IL

### **Kristine Anne Scordo, PhD, ACNP-BC, FAANP**

Dayton, OH

### **Joan King, PhD, ACNP-BC, ANP-BC, FAANP**

Nashville, TN

### **Julie Stanik-Hutt, PhD, ACNP-BC, GNP-BC, CCNS, FAANP, FAAN**

Iowa City, IA